

# Lead Me To The Cross

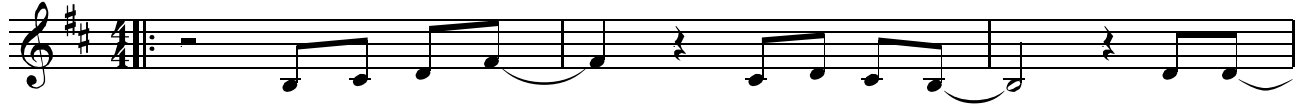
Words and Music by  
Brooke Fraser

♩ = 75

Bm

F#m7/A

G



Sav - iour I come, \_\_\_\_\_ qui - et my soul, \_\_\_\_\_ re - mem -  
You were as I, \_\_\_\_\_ tempt - ed and tried, \_\_\_\_\_ 7 hu -

4

D

A

Bm

F#m7/A



ber \_\_\_\_\_ re - demp - tion's hill, \_\_\_\_\_ where Your Blood was spilled, \_\_\_\_\_  
man. \_\_\_\_\_ The word be - came flesh, \_\_\_\_\_ bore my sin in death. \_\_\_\_\_

7

G

D

A

Em7



\_\_\_\_\_ for my ran - som. \_\_\_\_\_ Ev - 'ry - thing \_\_\_\_\_ I  
\_\_\_\_\_ Now, You're ris - en. \_\_\_\_\_

10

Asus

A

Bm

A

Gmaj7



once held \_\_\_\_\_ dear, \_\_\_\_\_ I count \_\_\_\_\_ it all \_\_\_\_\_ as loss. \_\_\_\_\_ Lead me to the cross, \_\_\_\_\_

13

Gmaj7

D

A



\_\_\_\_\_ where Your Love poured \_\_\_\_\_ out. \_\_\_\_\_ Bring me to my knees, \_\_\_\_\_

15

Gmaj7

D

A

Gmaj7

D



\_\_\_\_\_ Lord, I lay me \_\_\_\_\_ down. \_\_\_\_\_ Rid me of \_\_\_\_\_ my - self, \_\_\_\_\_ I be - long to \_\_\_\_\_ You. \_\_\_\_\_

Lead Me To The Cross - 2

18 *Last time to Coda*

A Em9 G A Bm F#m7/A

Oh, lead me. Lead me to the cross.

22 G Bm F#m7/A Em7 Bm

To Your

27 D Gmaj7 A D G

Heart. To Your Heart.

30 A D Gmaj7

Lead me to Your Heart.

32 A D G A *D.S. al Coda*

Lead me to Your Heart. Lead me to the cross.

*Coda*

35 Gmaj7 A Gmaj7 D


Lead me to the cross, where Your Love poured out.

37 A Gmaj7 D

Bring me to my knees, Lord, I lay me down.

Lead Me To The Cross - 3


39 **A** **Gmaj7** **D**



— Rid me of \_\_\_ my - self, \_\_\_ I be - long to \_\_\_ You. \_\_\_

Detailed description: This block contains the first line of musical notation, measures 39 and 40. The key signature is one sharp (F#). Measure 39 starts with a whole rest, followed by a quarter note G4, a quarter note A4, a quarter note B4, and a quarter note C5. Measure 40 starts with a quarter note G4, a quarter note F#4, a quarter note E4, and a quarter note D4. Chord symbols A, Gmaj7, and D are placed above the staff. Lyrics are written below the staff with blank lines for syllables.

41 **A** **Em9** **G** **A** **N.C.**



— Oh, lead me. \_\_\_ Lead me to the cross. \_\_\_

Detailed description: This block contains the second line of musical notation, measures 41 and 42. Measure 41 starts with a quarter note G4, a quarter note A4, a quarter note B4, and a quarter note C5. Measure 42 starts with a quarter note G4, a quarter note F#4, a quarter note E4, and a quarter note D4. Chord symbols A, Em9, G, A, and N.C. are placed above the staff. Lyrics are written below the staff with blank lines for syllables. The piece ends with a double bar line.